



AMODAA

DODDABALLAPUR

CONTACT

+9180503 93332

info@patelsinnrealty.com

**Sy. No - 20 to 25
Chokkanahalli Village
Doddaballapura
Bengaluru**



Developing Tomorrow's
Vision Today

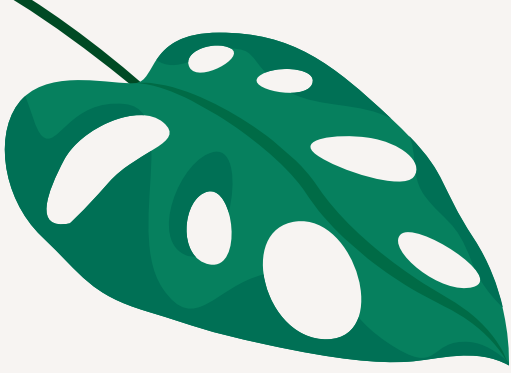
Nestled within North Bangalore's scenic outskirts

Nestled in Bangalore's serene outskirts, Amodaa Doddaballapur offers lush greenery, scenic hills, and modern amenities. Ideal for nature lovers seeking a peaceful retreat amidst panoramic views and rustic charm.



visual representation of the site

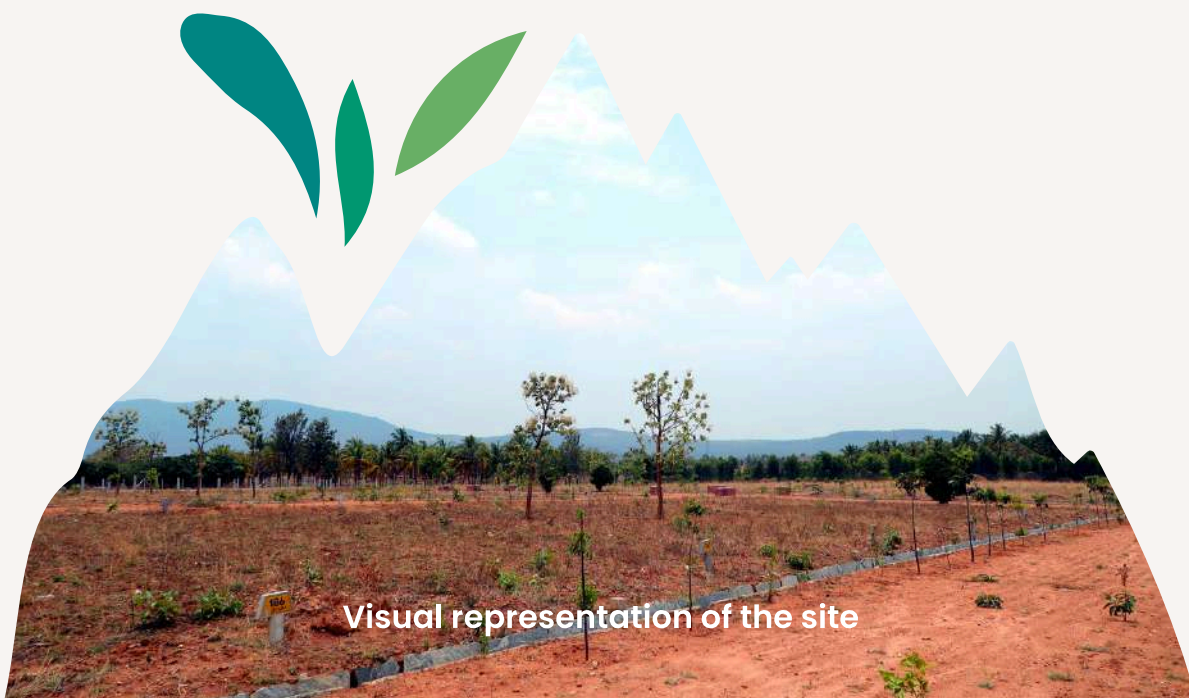




We believe that the best way to predict the future is to create it – so we built a place that is respectful to **our ecosystem.**

Harmonizing progressive ecological practises with luxurious indulgence

Amodaa Doddaballapur is a **premium plotted development** situated in the midst of the high growth Doddaballapur corridor with a slew of investment opportunities slated in the near future, offering high returns to investors. Amodaa being one of the **most lucrative and sought after developments** in the serene environs of Doddaballapur.



Visual representation of the site





Wake up to this breathtaking view everyday!



Investing in Amodaa Doddaballapur represents an investment in enhancing your **quality of life**. Wrapped in the blanket of nature, with panoramic views of the Makalidurga hills, Amodaa Doddaballapur is designed for those who seek an unparalleled lifestyle amidst the serenity of the hills.



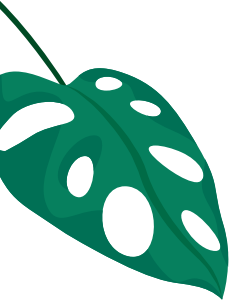


Amodaa suggests a pleasure trip

Discover tranquility at our premium **30-acre** plotted development in Doddaballapur, on the scenic outskirts of Bangalore. Nestled at the foothills of Nandi Hills and Makalidurga, this serene haven offers breathtaking views, lush landscapes, and modern amenities, perfect for those seeking an idyllic retreat from urban life.



visual representation of the site



Masterplan

Phase 2

150+ sites



Phase 1

70+ sites
ready for sale



Own a slice of nature in paradise

Experience the ultimate escape at our exclusive plotted development, located in the **outskirts of Bengaluru city**. This serene enclave features stunning vistas, verdant greenery, and top-notch amenities, providing a perfect blend of **natural beauty and modern living**



OUR FOUNDER



Mr. Ramesh Patel

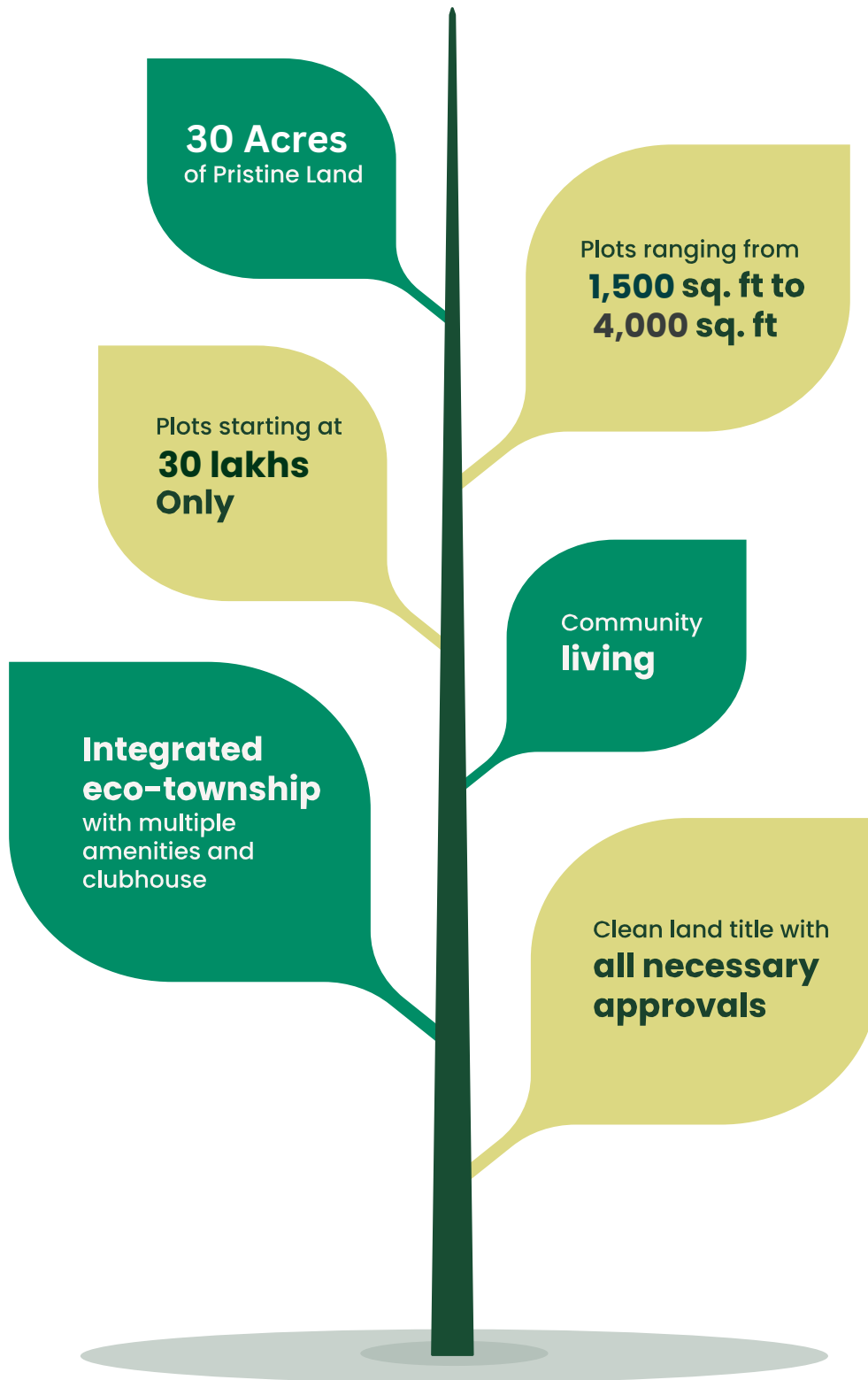
Carrying close to two decades of experience in the hospitality sector, Ramesh Patel has helped Patel's Inn achieve the epitome of luxury and tranquility in the heart of Bangalore. Being the first in South India to establish a Go-Karting track, Patel's Inn Realty Ventures is the latest addition to the Patel's Inn Group, which focuses on lifestyle projects for like-minded clientele that believe in sustainable living for a greater future.

**At the young
age of 26,**

inspired by the abundant greenery and determined to provide the customers with vivid and diverse experiences for a lifetime, envisioned an elite Private Membership Club in a 4 Acre Coconut Grove. Along with his associates, he transformed the space and simultaneously forayed into development in North Bangalore and Coorg to offer the perfect assortment of real estate and hospitality.



WHAT WE OFFER



Property Visuals



FACILITIES & AMENITIES



Amodaa Doddaballapur Your retreat in Nature's embrace

The project offers luxurious plots in the serene hills of Bangalore's outskirts, hosting a number of in-house **recreational amenities.**

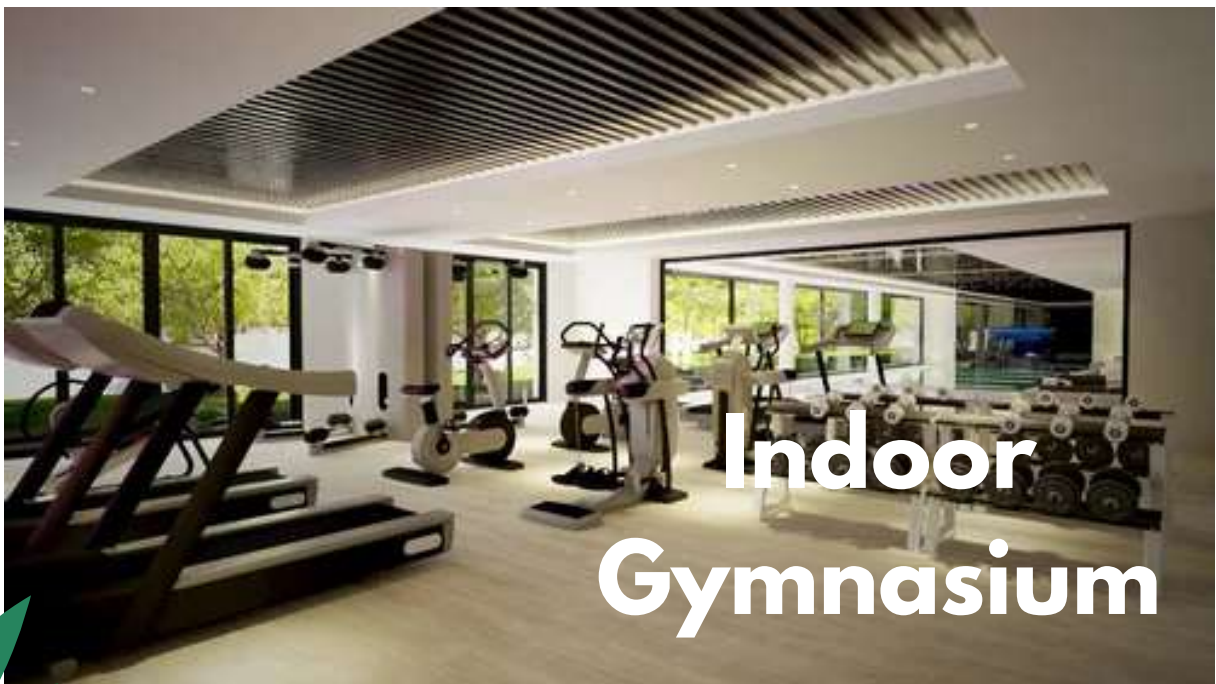




Swimming Pool



Sporting Facilities



Indoor Gymnasium





**Futsal
court**



**Mini golf
turf**



**Paddle
tennis**





**A contemporary
banquet space
to bring your
celebrations
to life.**



PROXIMITY AND LOCATION

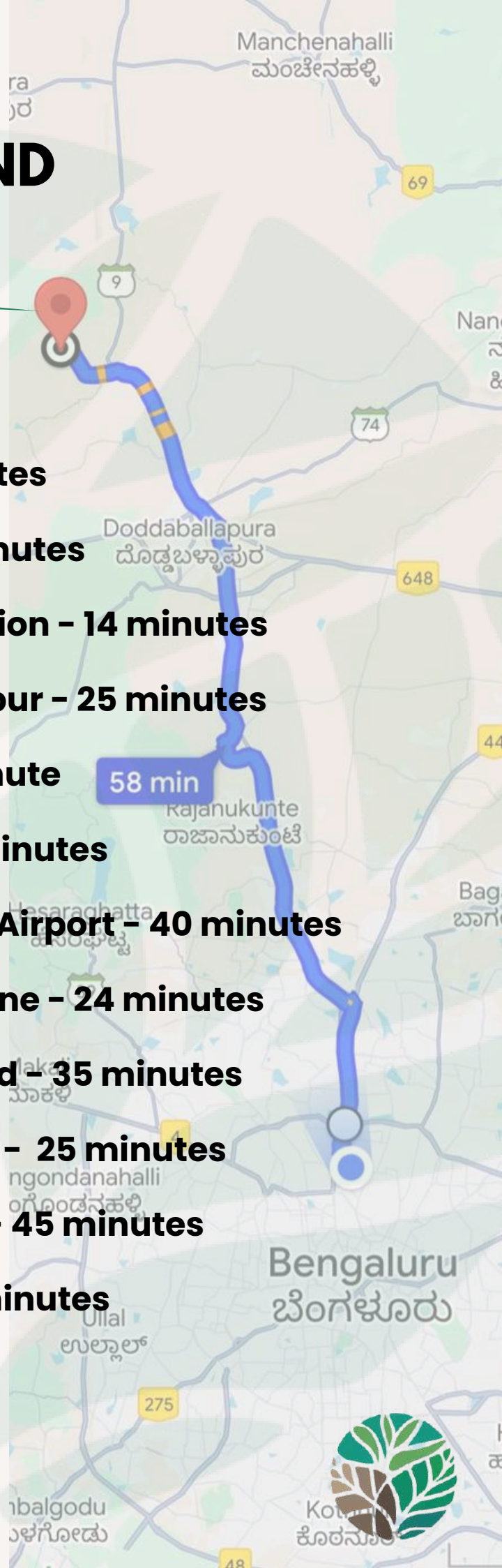
Our project boasts excellent connectivity, with easy access to Bangalore's major highways, upcoming developments and the airport, ensuring seamless travel for work and leisure.

**An exclusive opportunity
to invest in Bangalore's
prime real estate corridor**

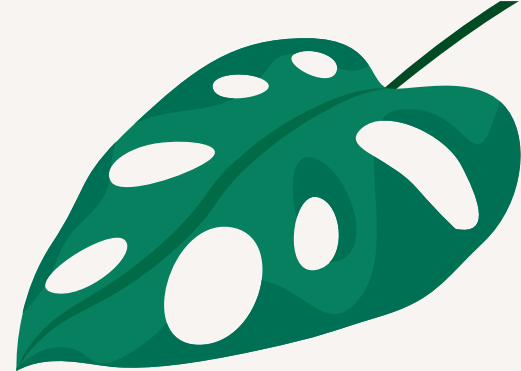
Only 10 Kms away from Doddaballapur town, **quick 10-minute drive** will bring you to our project location, offering ease of access and unparalleled accessibility.

CONNECTIVITY AND ACCESSIBILITY

- **Green Valley Resort – 3 minutes**
- **Doddaballapur Town – 10 minutes**
- **Doddaballapur Railway Station – 14 minutes**
- **Manipal Hospital Doddaballapur – 25 minutes**
- **DMart Doddaballapur – 22 minute**
- **Yelahanka Bengaluru – 45 minutes**
- **Kempegowda International Airport – 40 minutes**
- **Doddaballapur Industrial Zone – 24 minutes**
- **STRR Satellite Town Ring Road – 35 minutes**
- **Harrow International School – 25 minutes**
- **Padukone Dravid Academy – 45 minutes**
- **Vidya Shilp University – 40 minutes**
- **Hebbal Flyover – 60 minutes**



Nearest attractions



Makalidurga Hills

Nandi Hills





Gundamagere Lake

Prestige Golfshire



WHY AMODAA?

**The
postcard
perfect
Amodaa
Doddaballapur**

as the natives call it, is a land of breathtaking landscapes and picturesque charm. Sit back, relax and soak in the experience of a lifetime.



Our eco-friendly properties

Amodaa offers a tranquil escape from the hustle and bustle of city life. Our project offers a serene hill-side escape and is a sanctuary just an **hour's drive from Bangalore city.**



CONTACT US

Patel's Inn Realty Ventures

#1, 15th Cross, 2nd Block,
Govindraj Garden, RT Nagar,
Bengaluru (Bangalore) Urban,
Karnataka, 560032.

PHONE

+91 80503 93332

EMAIL

Info@patelsinnrealty.com

